

PuroTech®

Pressure Gauges



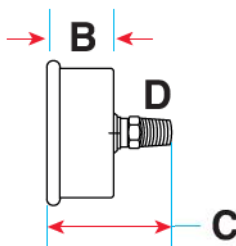
PuroTech® Pressure Gauges are offered in a 0 – 150, 0 – 160 and 0 – 300 psi scale. All pressure gauges have an easy-to-read two tone dial which is printed in bold UV resistant ink for ease of legibility even after extensive exposure to direct sunlight. PuroTech pressure gauges have been designed for the most demanding applications and offer durability, accuracy, and high quality.

Feature:

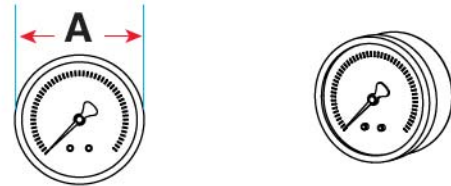
- Bottom and Back Mount
- Brass and Stainless Steel Casings
- Aluminum Internals
- 1.5", 2", and 2.5" Dials
- Dry or Liquid Filled

Technical Specifications:

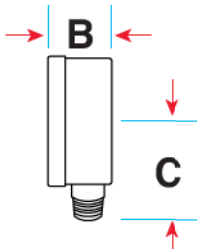
- **Casings:** Brass, Stainless Steel 304
- **Internals:** Aluminum
- **Stems:** Brass, Chrome Plated Brass, 304 SS
- **Face:** Aluminum, Black and Blue Print
- **Lens:** Clear Acrylic
- **Pointer:** Aluminum, Black
- **Fluid:** UV Resistant Synthetic Silicone
- **Temp Rating:** 0° F to 140° F



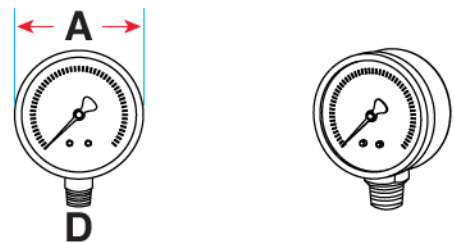
BACK MOUNT GAUGES



Dimensions					
Gauge Size	A	B	C	D	Liquid Filled
1.5" 0-150	1.610"	.977"	1.572"	1/8"NPT	NO
2.5" 0-300	2.475"	1.13"	2.22"	1/4"NPT	YES



BOTTOM MOUNT GAUGES



Dimensions					
Gauge Size	A	B	C	D	Liquid Filled
2 0-160	2.005 "	1.121"	1.755"	1/4"NPT	NO
2.5" 0-300	2.475"	1.13"	2.22"	1/4"NPT	YES

Part Number:	Pressure Rating (psi):	Dial Size: (in):	Glycerin Filled:	Mount:	Clamp:	Stem Connection:
200902	0-150	1.5	No	Back	No	1/8" MNPT
200901	0-160	2	No	Bottom	No	1/4" MNPT
200903	0-300	2.5	Yes	Bottom	No	1/4" MNPT
200904	0-300	2.5	Yes	Back	Yes	1/4" MNPT



800.320.4074 | 760.723.5417 | F: 760.728.5062 |

www.routratec.com | E: info@routratec.com | 541 Industrial Way, Suite 1 | Fallbrook, CA 92028 |